



Pipe[®]Seal

Pipe- and Cable-Penetration

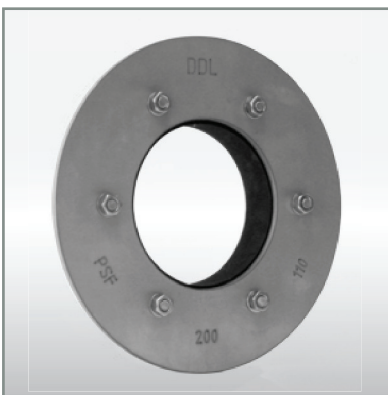
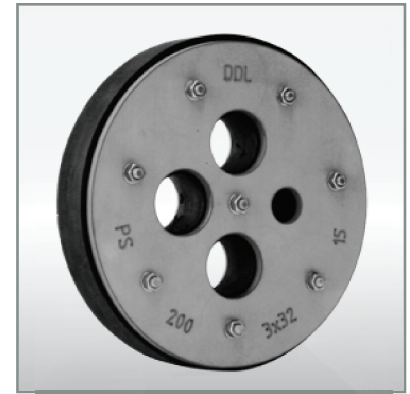
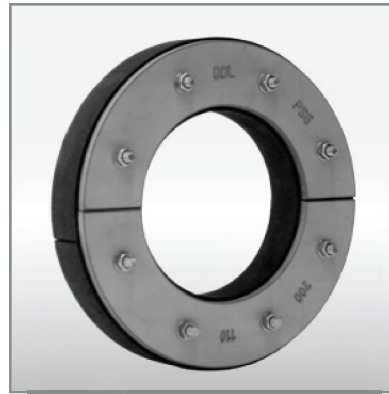
Productrange
Compact-Seals

Pipe-Seal

- Pipe-Seal Standard
- Pipe-Seal Special-Dimensions
- Pipe-Seal Special-Materials
- Pipe-Seal Fire-Protection
- **NEW** Pipe-Seal Segment-Rings
- **NEW** Pipe-Seal Cavo
- **NEW** Pipe-Seal Easy
- **NEW** Pipe-Seal Hybrid (PE)
- **NEW** Cable-Penetration
System 150 (Frame/Insert)



Pipe-Seal Standard

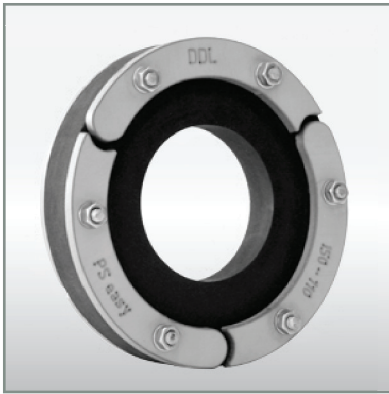


Versions:

- Rubber-Element 1-Ply, 30 mm thickness (Pressure-tight up to 3 bars)
2-Ply, 60 mm thickness (Pressure-tight up to 5 bars)
- Steelparts stainless-steel
- Pressure-tight against water/gas (EPDM)
- Pressure-tight against aggressive surroundings (Nitrile)
- Special rubber-parts for contact with potable-water (KTW/W270 approved)
- Protection against noise according Spec DIN 4109
- Oversized one-end flange-dimension available

Each size as divisible version available.

Pipe-Seal Easy

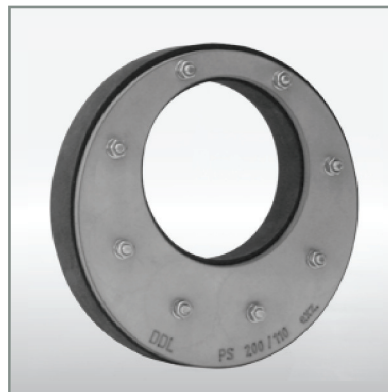
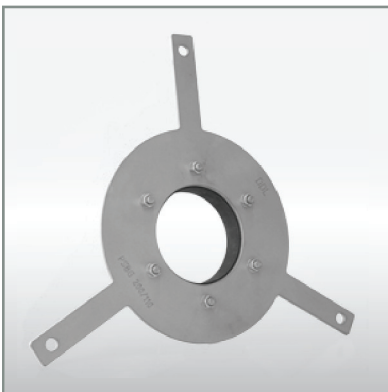


Compact-Seal in Steel-Segment-Design

Versions:

- 1-Ply 20 mm thickness, 2-Ply 40 mm thickness
- Steelparts stainless-steel
- Rubberpart EPDM
- Pressure-tight against water and gas
- If necessary divisible at construction-site

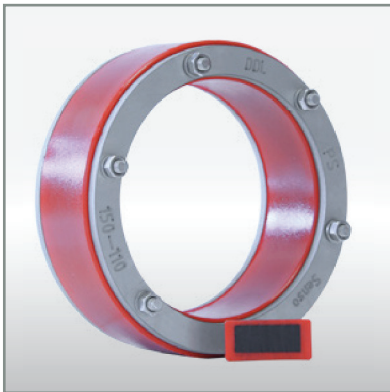
Pipe-Seal Special-Dimensions



Versions:

- Rubber-Element 1-Ply, 30 mm thickness (Pressure-tight 3 bars)
2-Ply, 60 mm thickness (Pressure-tight 5 bars)
- Steelparts stainless-steel
- Pressure-tight against water/gas (EPDM)
- Pressure-tight against oil,grease, fuel, aggressive surroundings (Nitrile)
- all materials according to Spec KTW/W270 for contact with potable-water
- Noise-protection according to Spec DIN 4109
- with wall fixing-straps
- for excentric carrier-pipe (also divisible version available)
- for carrier-pipe special-dimensions

Pipe-Seal Special-Materials Pipe-Seal Senso / Pipe-Seal Hybrid (PE)

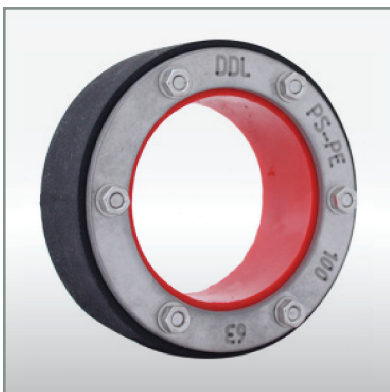


Especially for

- Plastic-Pipes with poor wallthickness
- Isolated Heat-Pipes
- Corrugated pipes

Version:

- 2 Component design
- Support-Part Rubber middlehard
- Seal-Part Duroplast-Elastomer extreme softness
- excellent chemical, mechanical and thermal properties
- Steelparts stainless-steel
- Pressure-tight against water and gas



Pipe-Seal ZWR 4 - Compact-Seal in Rubber-Segment-Design



Adaptation according
Carrier-Pipe-OD at construction-site

Version:

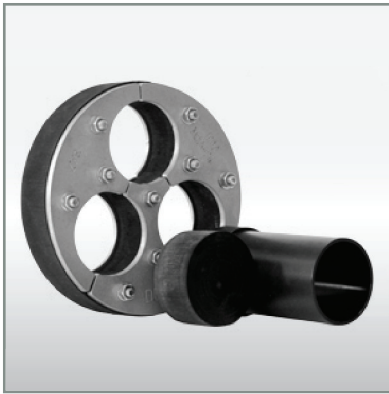
- Rubber-Element 1-Ply, 30 mm thickness (EPDM)
- Pressure-tight against water and gas
- Steelparts stainless-steel
- Noise-protection according Spec DIN 4109
- Lowcost stocking
- with oversize-flange available

Dimensions:

OD DN 100 (mm)	Segment-Diameters	20/25/30/35/40/45/50/55/60/64
OD DN 100-PE *	Segment-Diameters	32/40/50/63
OD DN 125 (mm)	Segment-Diameters	63/75-76/89-90
OD DN 150 (mm)	Segment-Diameters	63/75-76/89-90/110
OD DN 200 (mm)	Segment-Diameters	110/125/139-140/160

* in divisible-version available

Cable-Penetration



CAVO III & VI

Seal-Inserts for 3 / 6 cables or pipes

Version:

- Rubber-Element 1-Ply, 30 mm thickness, Pressure-tight up to 2 bar
- Steelparts stainless-steel
- Pressure-tight against water and gas (EPDM)
- Noise-protection according Spec DIN 4109
- only as divisible version

- Inserts-Variations:

- Pipe, ABS, for shrinktubes
 - 3 x 50 mm OD
 - 6 x 32 mm OD
- Segmentring-Insert
 - Duroplast-Elastomer
(extreme softness for cable-ovality-balance)
 - for core-bearing-hole ID 150 mm
 - for cable-ODs
 - 3 openings 60 mm
(segment-ring-diameters 24-30-36-42-48-54)
 - 6 openings 40 mm
(segment-ring-diameters 14-18-22-26-30)

Cable-Penetration Round-Frame-System Standard / Fire-Protection



Modul-Inserts for common cable-diameters

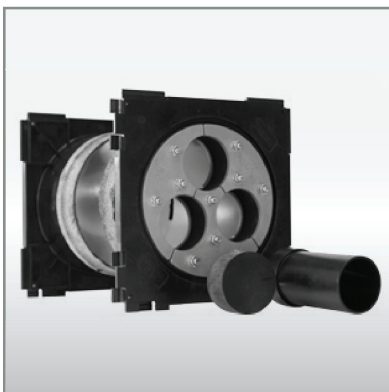
Version:

- Steelparts stainless-steel
- 2-Ply, 60 mm thickness
- Pressure-tight against water and gas (EPDM)
- Optional special fire-protection-rubber (halogen free)
- Non-visible
- Cabelmoduls/Blindmoduls
fire-protection-rubber (halogen free)

Dimensions:

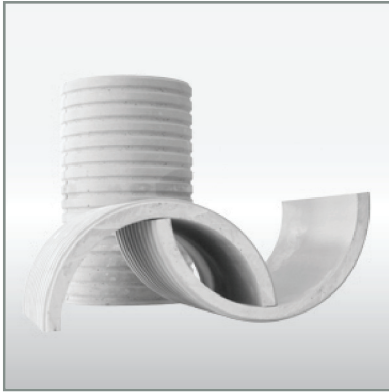
- Core-bearing-hole ID DN 50 to 200
- Inside square-area 30x30 mm to 120x120 mm
- for sleeves with special IDs

Cable-Penetration Square-Frame-System DSP 150



Cable-Penetration DSP 150
see DDL Systempackung (sep. Katalog)

Sleeves



PQZ-Concrete-Sleeves are free of asbestos and made of Polymeric-Silicasand-Cement

The water-stop groove-dimensions and the dimensions and tolerances overall are according to the specification of one of the largest german water-supply-companies

Design:

Circumferential grooves for additional protection against water-penetration

Dimensions:

- ID DN 80 to DN 1200 (mm)
- Length 100 to 1000 (mm)
- lengthwise cut possible

Sealing-Device in front of Wall



Steeldevices according to Spec 18195 Part 9 for walls with foilcovering or bitumen-coating

Design:

- Front-wall-sleeve
- Loos-type and fix-type flanges
- divisible version possible
- Multiple-penetration version possible

Accessories



BetonFinish for Core-Bearing-Holes

**Watertight finish for dry
concrete-surfaces**

- 2 component epoxyresin
- free of solvents
- for dry surfaces
- low viscosity
- universally usable

Field of Application:

Any concrete-surfaces, screeds
and stone

BetonFinish KTW for Core-Bearing-Holes

Watertight finish for concrete-surfaces

- 2 component epoxyresin
- according to Spec KTW/W270
for contact with potable-water
- free of solvents
- for dry and wet surfaces
- low viscosity
- universally usable