



## **Pipe<sup>®</sup>Seal**

Pipe- and Cable-Penetration

Productrange  
Compact-Seals

# **Pipe-Seal**

- Pipe-Seal Standard
- Pipe-Seal Special-Dimensions
- Pipe-Seal Special-Materials
- Pipe-Seal Fire-Protection
- **NEW** Pipe-Seal Segment-Rings
- **NEW** Pipe-Seal Cavo
- **NEW** Pipe-Seal Easy
- **NEW** Pipe-Seal Hybrid (PE)
- **NEW** Cable-Penetration  
System 150 (Frame/Insert)



## Pipe-Seal Standard

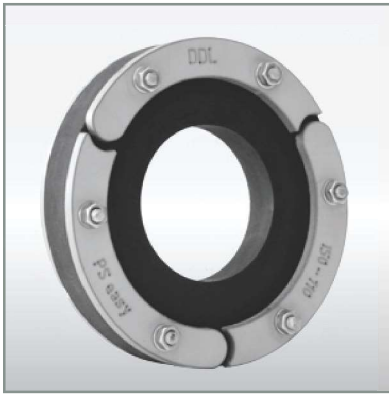


### Versions:

- Rubber-Element 1-Ply, 30 mm thickness (Pressure-tight up to 3 bars)  
2-Ply, 60 mm thickness (Pressure-tight up to 5 bars)
- Steelparts stainless-steel
- Pressure-tight against water/gas (EPDM)
- Pressure-tight against aggressive surroundings (Nitrile)
- Special rubber-parts for contact with potable-water (KTW/W270 approved)
- Protection against noise according Spec DIN 4109
- Oversized one-end flange-dimension available

Each size as divisible version available.

## Pipe-Seal Easy



### Compact-Seal in Steel-Segment-Design

#### Versions:

- 1-Ply 20 mm thickness, 2-Ply 40 mm thickness
- Steelparts stainless-steel
- Rubberpart EPDM
- Pressure-tight against water and gas
- If necessary divisible at construction-site

## Pipe-Seal Special-Dimensions



#### Versions:

- Rubber-Element 1-Ply, 30 mm thickness (Pressure-tight 3 bars)  
2-Ply, 60 mm thickness (Pressure-tight 5 bars)
- Steelparts stainless-steel
- Pressure-tight against water/gas (EPDM)
- Pressure-tight against oil,grease, fuel, aggressive surroundings (Nitrile)
- all materials according to Spec KTW/W270 for contact with potable-water
- Noise-protection according to Spec DIN 4109
- with wall fixing-straps
- for excentric carrier-pipe (also divisible version available)
- for carrier-pipe special-dimensions

# Pipe-Seal Special-Materials

## Pipe-Seal Senso / Pipe-Seal Hybrid (PE)

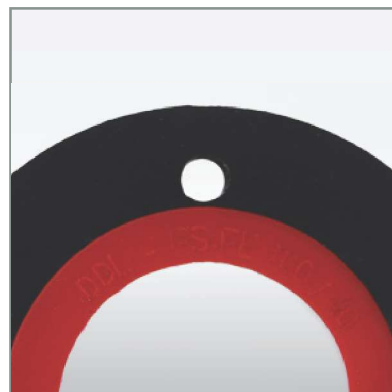


### Especially for

- Plastic-Pipes with poor wallthickness
- Isolated Heat-Pipes
- Corrugated pipes

### Version:

- 2 Component design
- Support-Part Rubber middlehard
- Seal-Part Duroplast-Elastomer extreme softness
- excellent chemical, mechanical and thermal properties
- Steelparts stainless-steel
- Pressure-tight against water and gas



# Pipe-Seal ZWR 4 - Compact-Seal in Rubber-Segment-Design



## Adaptation according Carrier-Pipe-OD at construction-site

### Version:

- Rubber-Element 1-Ply, 30 mm thickness (EPDM)
- Pressure-tight against water and gas
- Steelparts stainless-steel
- Noise-protection according Spec DIN 4109
- Lowcost stocking
- with oversize-flange available

### Dimensions:

OD DN 100 (mm)	Segment-Diameters	20/25/30/35/40/45/50/55/60/64
OD DN 100-PE *	Segment-Diameters	32/40/50/63
OD DN 125 (mm)	Segment-Diameters	63/75-76/89-90
OD DN 150 (mm)	Segment-Diameters	63/75-76/89-90/110
OD DN 200 (mm)	Segment-Diameters	110/125/139-140/160

\* in divisible-version available

# Cable-Penetration



## CAVO III & VI

### Seal-Inserts for 3 / 6 cables or pipes

#### Version:

- Rubber-Element 1-Ply, 30 mm thickness, Pressure-tight up to 2 bar
- Steelparts stainless-steel
- Pressure-tight against water and gas (EPDM)
- Noise-protection according Spec DIN 4109
- only as divisible version

#### - Inserts-Variations:

- Pipe, ABS, for shrinktubes
  - 3 x 50 mm OD
  - 6 x 32 mm OD
- Segmentring-Insert
  - Duroplast-Elastomer  
(extreme softness for cable-ovality-balance)
  - for core-bearing-hole ID 150 mm
  - for cable-ODs
    - 3 openings 60 mm  
(segment-ring-diameters 24-30-36-42-48-54)
    - 6 openings 40 mm  
(segment-ring-diameters 14-18-22-26-30)

## Cable-Penetration Round-Frame-System Standard / Fire-Protection



### Modul-Inserts for common cable-diameters

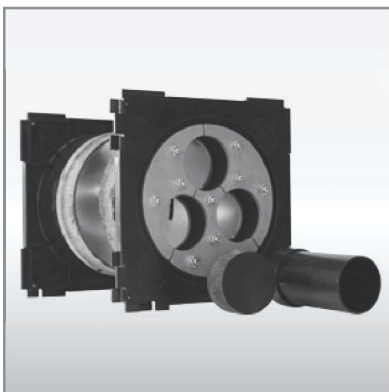
#### Version:

- Steelparts stainless-steel
- 2-Ply, 60 mm thickness
- Pressure-tight against water and gas (EPDM)
- Optional special fire-protection-rubber (halogen free)
- Non-visible
- Cabelmoduls/Blindmoduls  
fire-protection-rubber (halogen free)

#### Dimensions:

- Core-bearing-hole ID DN 50 to 200
- Inside square-area 30x30 mm to 120x120 mm
- for sleeves with special IDs

## Cable-Penetration Square-Frame-System DSP 150



### Cable-Penetration DSP 150 see DDL Systempackung (sep. Katalog)

## Sleeves



**PQZ-Concrete-Sleeves are free of asbestos and made of Polymeric-Silicasand-Cement**

The water-stop groove-dimensions and the dimensions and tolerances overall are according to the specification of one of the largest german water-supply-companies

### Design:

Circumferential grooves for additional protection against water-penetration

### Dimensions:

- ID DN 80 to DN 1200 (mm)
- Length 100 to 1000 (mm)
- lengthwise cut possible

## Sealing-Device in front of Wall



**Steeldevices according to Spec 18195 Part 9 for walls with foilcovering or bitumen-coating**

### Design:

- Front-wall-sleeve
- Loos-type and fix-type flanges
- divisible version possible
- Multiple-penetration version possible

# Accessories



## BetonFinish for Core-Bearing-Holes

Watertight finish for dry  
concrete-surfaces

- 2 component epoxyresin
- free of solvents
- for dry surfaces
- low viscosity
- universally usable

### Field of Application:

Any concrete-surfaces, screeds  
and stone

## BetonFinish KTW for Core-Bearing-Holes

Watertight finish for concrete-surfaces

- 2 component epoxyresin
- according to Spec KTW/W270  
for contact with potable-water
- free of solvents
- for dry and wet surfaces
- low viscosity
- universally usable

**vatech**<sup>2000</sup>

**[www.vatech.dk](http://www.vatech.dk)**